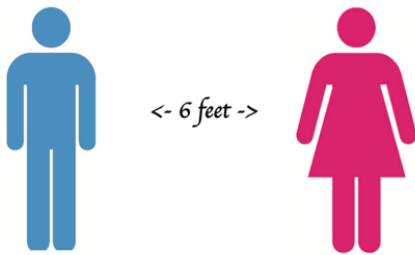




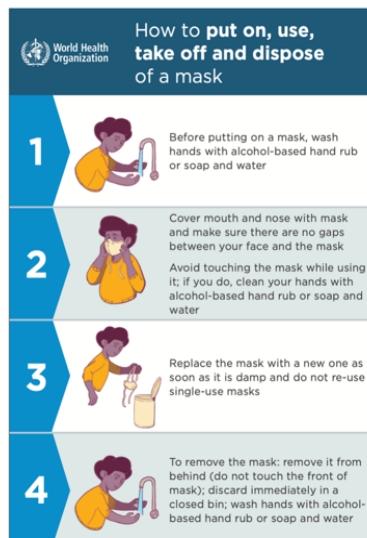
ADVISORY 34 ON THE 2019 NOVEL CORONAVIRUS DISEASE (COVID-19)

COVID-19 cases in Southern California, Southern Nevada, and Arizona (as of 14 May 2020)	
• Southern California:	57,813 COVID-19 cases with 2,436 deaths
• Southern Nevada:	5,144 COVID-19 cases with 282 deaths
• State of Arizona:	12,674 COVID-19 cases with 624 deaths

In line with recent announcements of the Governors of California, Arizona and Nevada on easing the stay-at-home policy, the **Philippine Consulate General strongly advises Filipino-American community to observe the following measures in order to protect each other from contracting and spreading the CoViD-19 pathogen:**



**Observe Physical distancing
From people not part of your household**



**Wear facial covering
when outside your home**



**Frequent hand-washing/
Hand-sanitizing**

On the resumption of the Philippine Consulate General’s services, rest assured that the Filipino- American community shall be informed of any developments in the Consulate General’s work schedule with adequate lead time through an Advisory to be posted on the Consulate General’s official website and Facebook page.

All COVID-19 related Advisories issued by the Consulate General could be accessed through this link:

<https://www.philippineconsulatela.org/advisory-on-the-2019-novel-corona-virus>

END.

For **emergencies** only:

Travel Document: emergencyTD@philippineconsulatela.org
Inquiries: <https://www.philippineconsulatela.org/contact-us-2>

Assistance to Nationals: lapcg.atn@gmail.com
Overseas Workers: pololosangeles@gmail.com